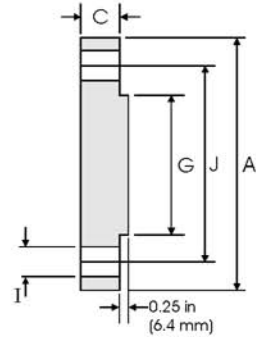
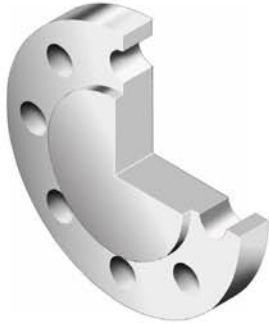




# Blind Flanges - ANSI B16.5 Class 400 lbs



Pipe		Flange Data		Raised Face	Drilling Data			Weight
Nominal Pipe Size		<b>A</b>	<b>C</b>	<b>G</b>	<b>H</b>	<b>I</b>	<b>J</b>	
	Outside Diameter	Overall Diameter	Flange Thickness min	Face Diameter	Number of Holes	Bolt Hole Diameter	Diameter of Circle of Holes	kg/piece
	in mm	in mm	in mm	in mm		in mm	in mm	
1/2	0.840	3.750	0.560	1.380	4	0.620	2.620	0.76
	21.30	95.20	14.20	35.10		15.70	66.55	
3/4	1.050	4.620	0.620	1.690	4	0.750	3.250	1.28
	26.70	117.3	15.70	42.90		19.10	82.60	
1	1.315	4.880	0.690	2.000	4	0.750	3.500	1.60
	33.40	123.9	17.50	50.80		19.10	88.90	
1 1/4	1.660	5.250	0.810	2.500	4	0.750	3.880	2.23
	42.20	133.3	20.60	63.50		19.10	98.60	
1 1/2	1.900	6.120	0.880	2.880	4	0.880	4.500	3.25
	48.30	155.4	22.30	73.15		22.40	114.3	
2	2.375	6.500	1.000	3.620	8	0.750	5.000	4.15
	60.30	165.1	25.40	91.90		19.10	127.0	
2 1/2	2.875	7.500	1.120	4.120	8	0.880	5.880	6.13
	73.00	190.5	28.40	104.6		22.40	149.4	
3	3.500	8.250	1.250	5.000	8	0.880	6.620	8.44
	88.90	209.5	31.70	127.0		22.40	168.1	
3 1/2	4.000	9.000	1.380	5.500	8	1.000	7.250	11.0
	101.6	228.6	35.00	139.7		25.40	184.2	
4	4.500	10.00	1.380	6.190	8	1.000	7.880	13.7
	114.3	254.0	35.10	157.2		25.40	200.2	
5	5.563	11.00	1.500	7.310	8	1.000	9.250	18.5
	141.3	279.4	38.10	185.7		25.40	235.0	
6	6.625	12.50	1.620	8.500	12	1.000	10.62	25.5
	168.3	317.5	41.10	215.9		25.40	269.7	
8	8.625	15.00	1.880	10.62	12	1.120	13.00	42.6
	219.1	381.0	47.80	269.7		28.40	330.2	
10	10.75	17.50	2.120	12.75	16	1.250	15.25	64.5
	273.0	444.5	53.80	323.9		31.75	387.4	
12	12.75	20.50	2.250	15.00	16	1.380	17.75	94.30
	323.8	520.7	57.15	381.0		35.10	450.9	
14	14.00	23.00	2.380	16.25	20	1.380	20.25	124
	355.6	584.2	60.45	412.8		35.10	514.4	
16	16.00	25.50	2.500	18.50	20	1.500	22.50	162
	406.4	647.7	63.50	469.9		38.10	571.5	
18	18.00	28.00	2.620	21.00	24	1.500	24.75	205
	457.2	711.2	66.55	533.4		38.10	628.7	
20	20.00	30.50	2.750	23.00	24	1.620	27.00	254
	508.0	774.7	69.85	584.2		41.10	685.8	
24	24.00	36.00	3.000	27.25	24	1.880	32.00	386
	609.6	914.4	76.20	692.2		47.80	812.8	

**Notes**

- Weights are based on manufacturer's data and are approximate.